

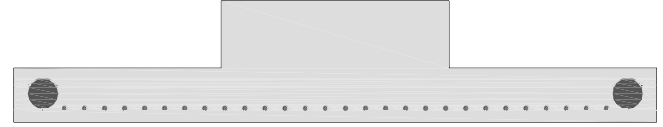
# REVERSE T-BARS



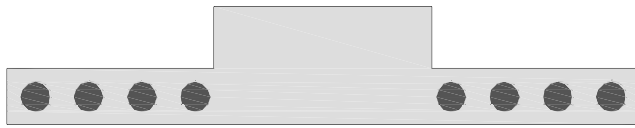
Reverse T-Bars from Iowa Customs are expertly crafted and manufactured from 14GA #8 304 Non-Directional Polished Stainless Steel. Our T-Bars are engineered with internal structure to help eliminate fatigue areas. Includes Gasketed Rear Access Panel, Gussets and Integrated Flap Hangers.



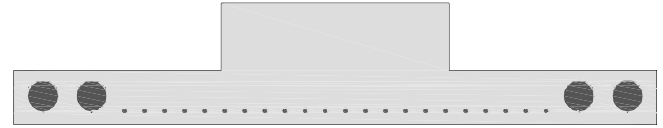
**Reverse T-Bar with (6) 4 in. Round Light Holes**  
IC975022-14



**Reverse T-Bar with (2) 4 in. and (28) 3/4 in. Round Light Holes**  
IC975025-14



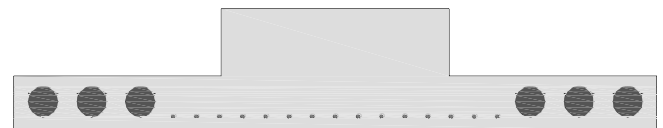
**Reverse T-Bar with (8) 4 in. Round Light Holes**  
IC975021-14



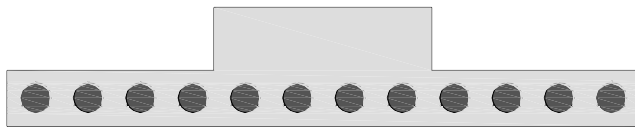
**Reverse T-Bar with (4) 4 in. and (22) 3/4 in. Round Light Holes**  
IC975026-14



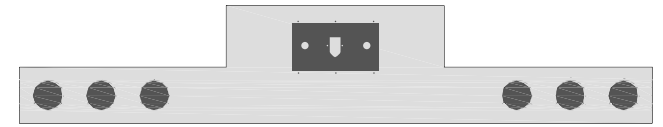
**Reverse T-Bar with (10) 4 in. Round Light Holes**  
IC975023-14



**Reverse T-Bar with (6) 4 in. and (16) 3/4 in. Round Light Holes**  
IC975027-14



**Reverse T-Bar with (12) 4 in. Round Light Holes**  
IC975020-14



**Reverse T-Bar with (6) 4 in. Round Light Holes and Recessed Airline Box with Trailer Air & (1) 7-Way**  
IC975028-14



UNIVERSAL  
FITMENT  
GUIDE



## PRODUCT INFORMATION

Part #	Light Holes	Dimensions	Finish	Fitment
IC975020-14	(12) 4 in. Round Light Holes	96 in. L x 18 in. H x 3 in. D	#8 304 Polished Stainless Steel	See QR Code
IC975021-14	(8) 4 in. Round Light Holes	96 in. L x 18 in. H x 3 in. D	#8 304 Polished Stainless Steel	See QR Code
IC975022-14	(6) 4 in. Round Light Holes	96 in. L x 18 in. H x 3 in. D	#8 304 Polished Stainless Steel	See QR Code
IC975023-14	(10) 4 in. Round Light Holes	96 in. L x 18 in. H x 3 in. D	#8 304 Polished Stainless Steel	See QR Code
IC975025-14	(2) 4 in. and (28) 3/4 in. Round Light Holes	96 in. L x 18 in. H x 3 in. D	#8 304 Polished Stainless Steel	See QR Code
IC975026-14	(4) 4 in. and (22) 3/4 in. Round Light Holes	96 in. L x 18 in. H x 3 in. D	#8 304 Polished Stainless Steel	See QR Code
IC975027-14	(6) 4 in. and (16) 3/4 in. Round Light Holes	96 in. L x 18 in. H x 3 in. D	#8 304 Polished Stainless Steel	See QR Code
IC975028-14	(6) 4 in. Round Light Holes and Recessed Airline Box with Trailer Air & (1) 7-Way	96 in. L x 18 in. H x 3 in. D	#8 304 Polished Stainless Steel	See QR Code